

New King & Queen Elementary School



Community Meeting
June 15, 2026



*Creating Together:
Meaningful Architecture
+ Student Success*

Agenda

Guiding Principles

Review from Previous Meeting

Site Plan Update

Floor Plan Update

Design Inspiration + Views

Schedule Overview

Cost Overview

Questions



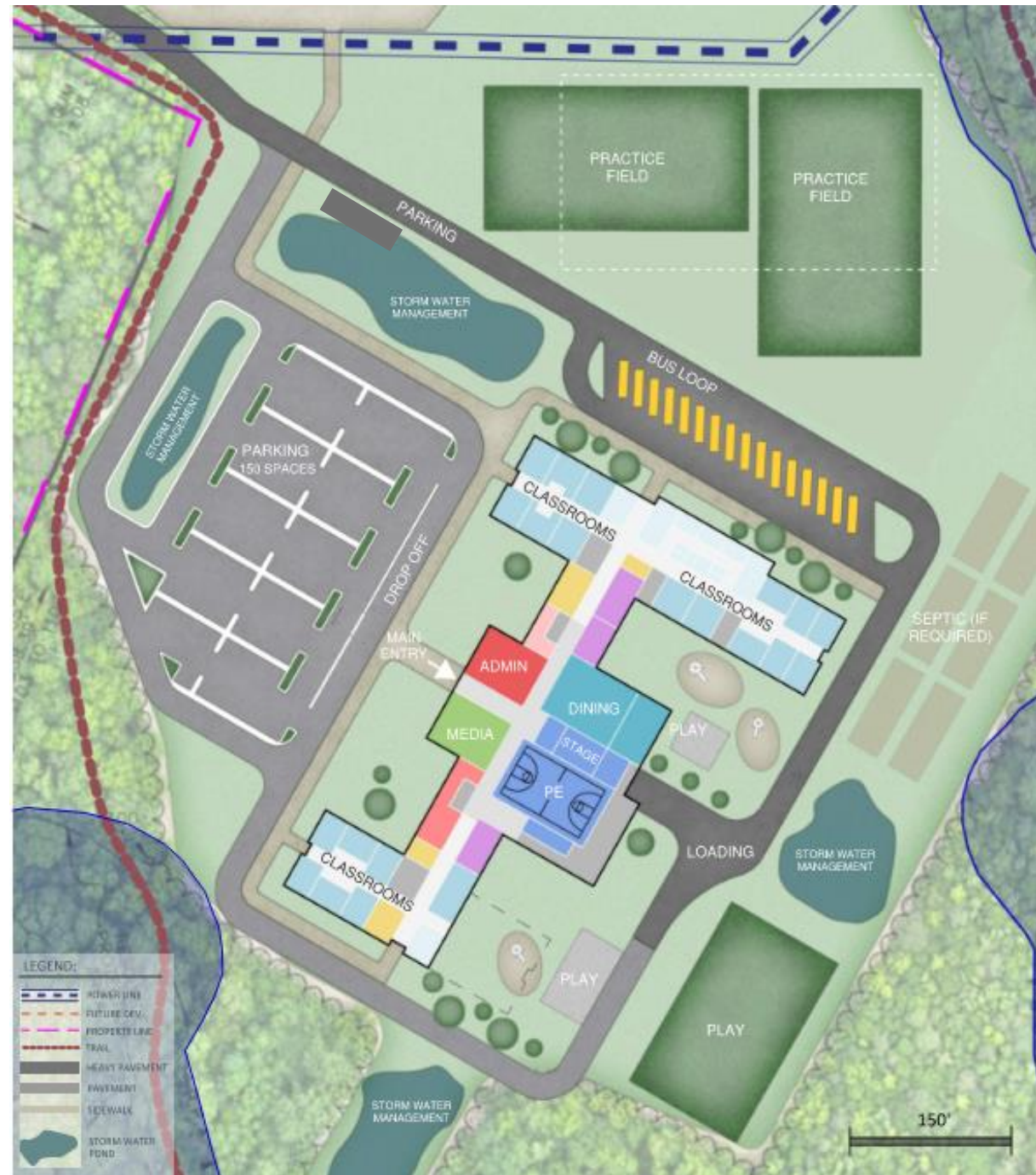
Guiding Principles for Success

- The school shall provide our students with **state-of-the-art technology** infrastructure for “Next Generation” learning.
- The school’s design shall clearly express our **King & Queen Community Pride**.
- The school shall exert a unifying influence, with a theme that relates to **King & Queen County’s history and identity**.
- The school shall provide quality public meeting and performance space (gym, dining commons, media center) for after-school use.
- The school shall provide **flexible and adaptable spaces** that encourage learning through collaboration.
- Both school and landscape should offer “built-in” lessons about sustainability, the environment, and local area agriculture and ecology.
- The design should promote a greater connection between the lower and upper schools that assists with the transition and encourages student retention.
- The school’s **design should stand the test-of-time** through its durability, by providing opportunity for expansion, and a promoting a generational source of community pride.

Option 1

July 2025 Community Meeting

- Separated bus and parking/drop-off vehicular circulation
- Practice fields for HS Athletics use
- Full perimeter loop for emergency vehicle access only
- Two primary building entrance points
- Available Site Area for playgrounds, storm water handling, and wastewater management



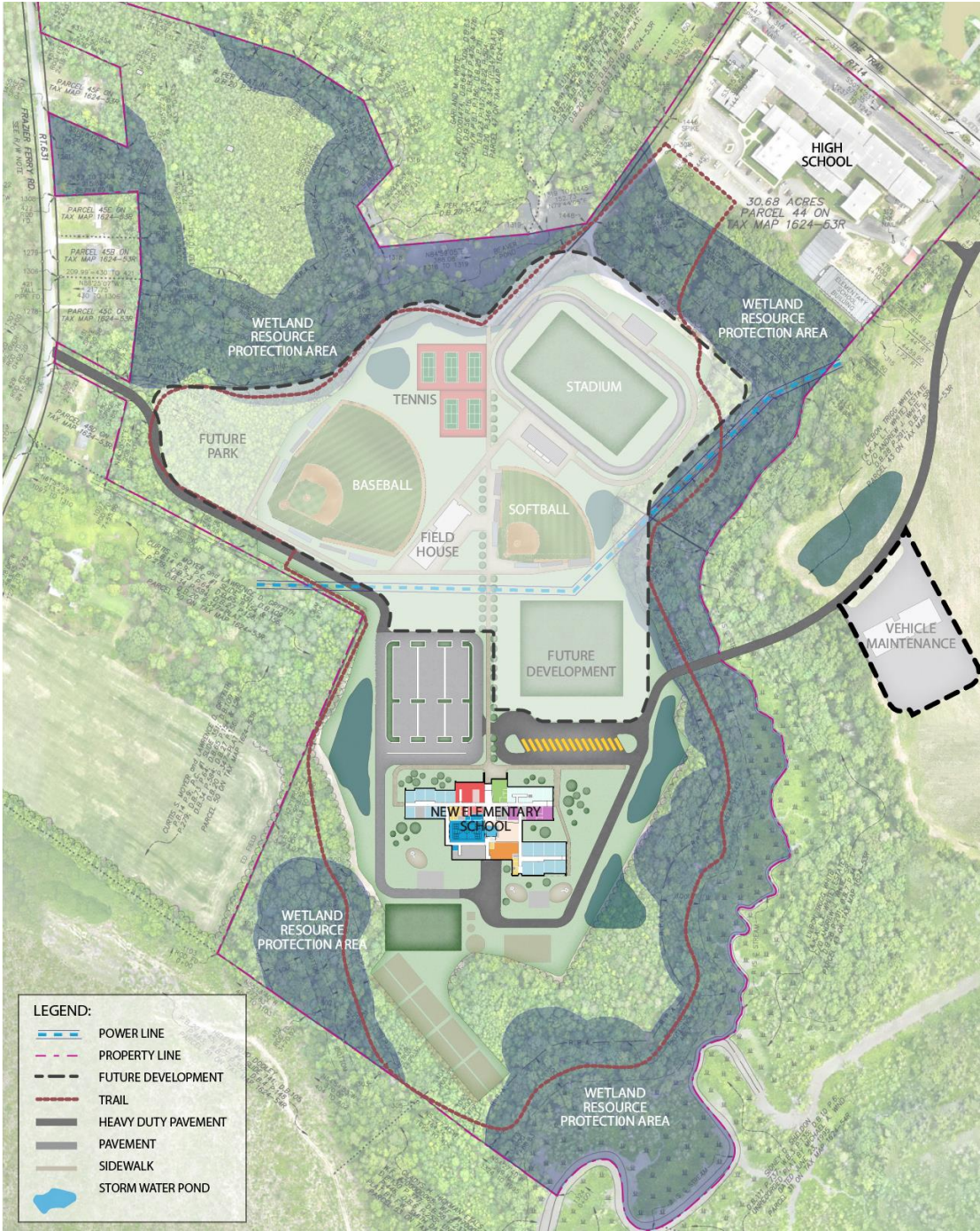
Option 2

July 2025 Community Meeting

- Separated bus and parking/drop-off vehicular circulation
- Practice fields for HS Athletics use
- Full perimeter loop for emergency vehicle access only
- Two primary building entrance points
- Available Site Area for playgrounds, storm water handling, and wastewater management



Site Master Plan



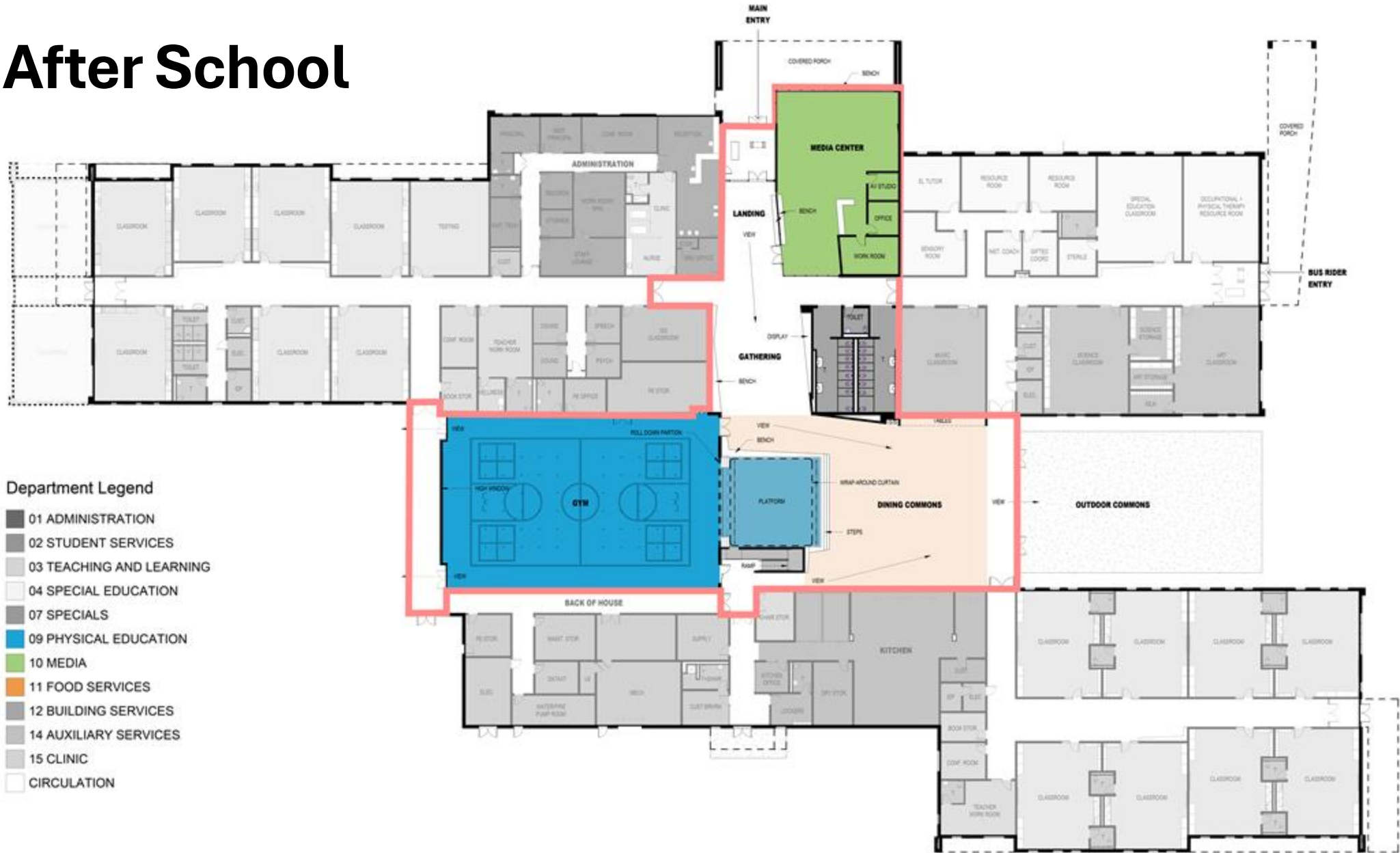
Site Plan



Floor Plan



After School



King + Queen Inspiration



Preliminary View



Main Entry View

Preliminary View



Outdoor Commons + Bus Rider Entry View

Preliminary View



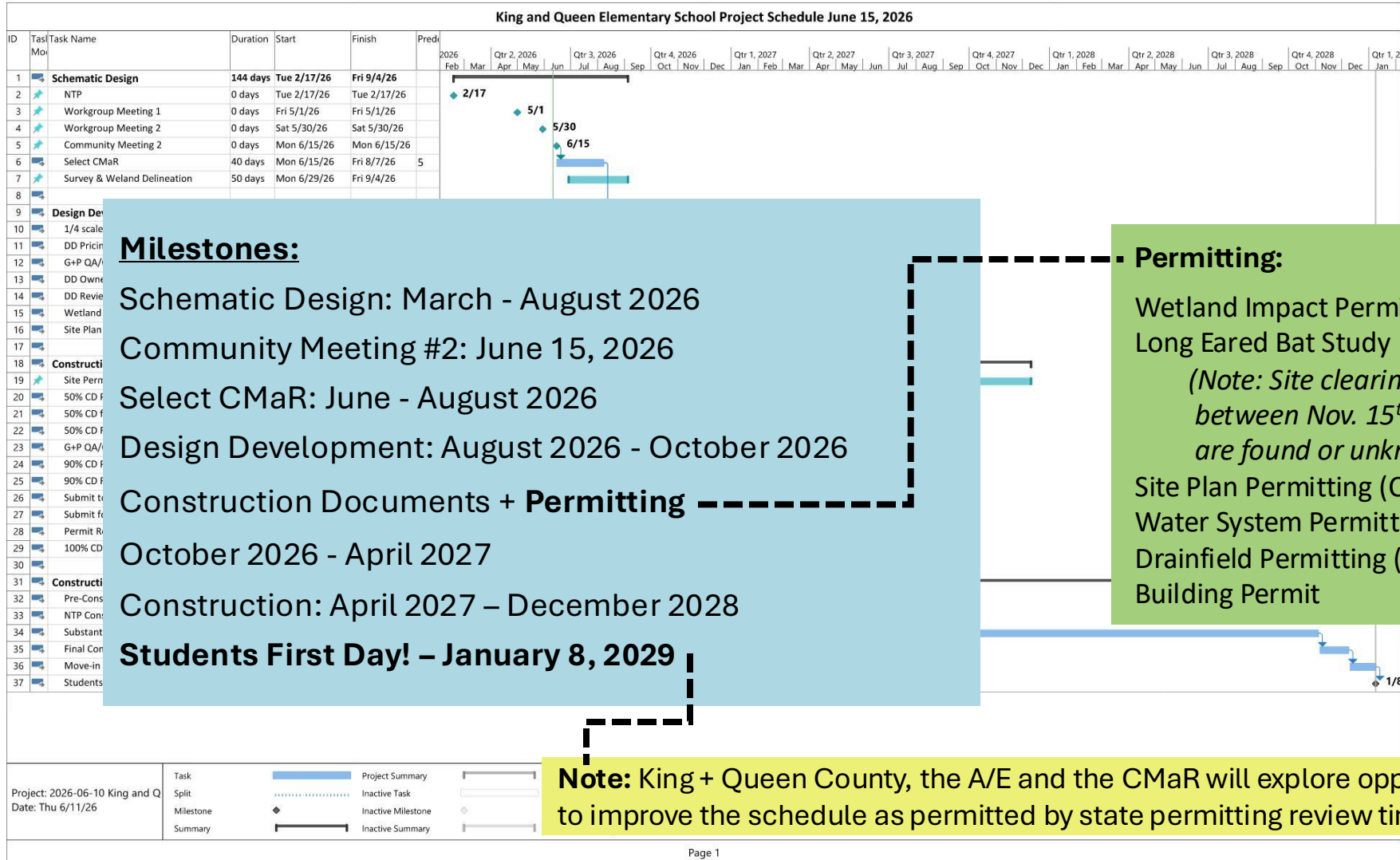
View from Northeast

Preliminary View



View from Northwest

Schedule



Milestones:

- Schematic Design: March - August 2026
- Community Meeting #2: June 15, 2026
- Select CMAr: June - August 2026
- Design Development: August 2026 - October 2026
- Construction Documents + Permitting - October 2026 - April 2027
- Construction: April 2027 – December 2028
- Students First Day! – January 8, 2029

Permitting:

- Wetland Impact Permit
- Long Eared Bat Study
(Note: Site clearing needs to happen between Nov. 15th & March 31 if bats are found or unknown.)
- Site Plan Permitting (County, VDOT + DEQ)
- Water System Permitting (VDH)
- Drainfield Permitting (VDH)
- Building Permit

Note: King + Queen County, the A/E and the CMAr will explore opportunities to improve the schedule as permitted by state permitting review times.

Project: 2026-06-10 King and Q	Task		Project Summary
Date: Thu 6/11/26	Split		Inactive Task
	Milestone		Inactive Milestone
	Summary		Inactive Summary

Questions?





Thank you!

